



OVERVIEW

The only modern acrylic lantern with an internal lens protected by a smooth outer cover, the FA-250 LED Marine Lantern is engineered to give the optimum mix of high horizontal candlepower, vertical divergence, reliable output under varying environmental conditions, and adaptability to different signaling requirements, simple logistics, and long service life with reduced spare parts requirements.

CERTIFICATES

- FM Approved
- NI/I/2/DC/T6 Ta = 55°C/T5 Ta = 70°C/T4A Ta = 85°C
- NI/I/2/IIC/T6 Ta = 55°C/T5 Ta = 70°C/T4 Ta = 85°C
- IEC Zone II
- Certificate Number: 05ATEX1408
- Coding: II 3 G EEx nL IIB T3

KEY FEATURES

- Extremely high flux, compact LEDs mounted on a heavy duty heat sink and encapsulated inside a sealed housing; the heat sink maximizes the life of the LED array by keeping the maximum temperature of the array to less than 50°C
- Heavy duty STABRITE® system designed to maximize the life of the LED array by providing a secondary environmental enclosure independent of the lantern housing, ensuring moisture does not reduce the life of the LED
- LED array/diffuser system that approximates a marine signal lamp located at the focal point of the lens to maximize the output of the lantern in the horizontal plane with horizontal uniformity of the beam
- Precision-molded acrylic Fresnel lens that has better optical characteristics and higher transmission than glass, and longer-term dimensional stability than cut acrylic; light weight and its color filter transmission is, typically, 25% higher than glass
- Smooth, protective acrylic lens cover eliminates the buildup of droplets of moisture, dust, salt spray, raindrops and other contaminants on the internal Fresnel lens prisms
- Can be simply and inexpensively converted to a different color or to color sectors
- Complies with the recommended IALA minimum vertical divergence of 2.5° and the FAA minimum vertical divergence of 3.0°

OPTIONAL FEATURES

- Bird spike
- Uniflash® III wireless synchronization system

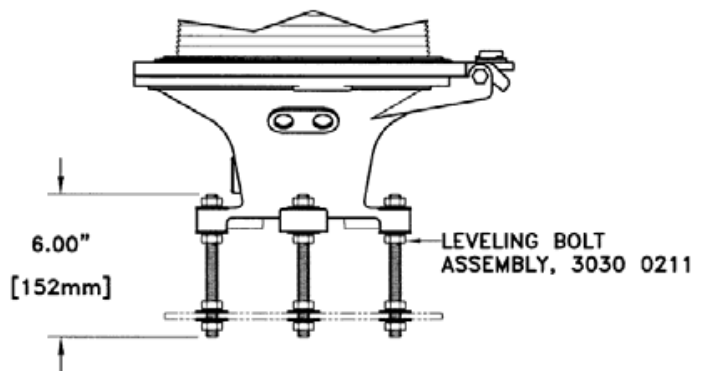
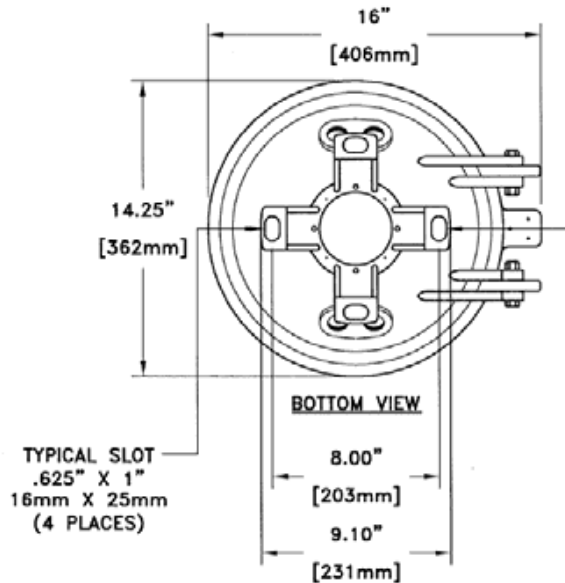
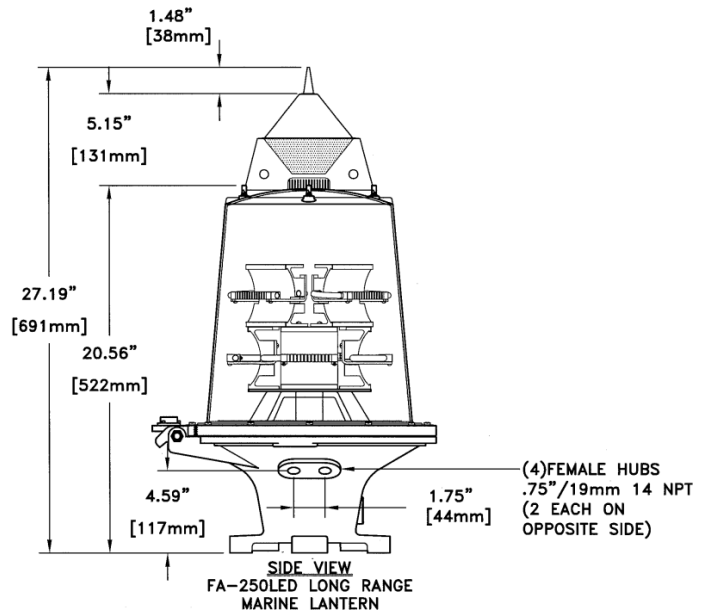
PHYSICAL SPECIFICATIONS

Dimensions	406 mm x 362 mm x 689 mm (16" x 14 1/4" x 27 1/8")
Weight	9 kg (19.5 lbs.)
Shipping Dimensions	457mm x 508mm x 762mm (18" x 20" x 30")
Shipping Weight	16 kg (35 lbs.)
Input Voltage	Available in 6, 12, 24 VDC or 120, 230 VAC
Power Consumption	6 Watts Average Optional 12W or 23 W Heatsink
Lens Type	250 mm 360° Visibility Acrylic Fresnel Lens; Smooth Lens Cover
Available Colours	Clear, Red, Green, Yellow, Blue
Light Source	Extremely High Flux LED Arrays
Visibility	360° Omnidirectional; Directional or Bi-Directional (Optional)
Vertical Divergence	4° to 50%; 9° to 10%
Monitor and Control	Optional
Synchronization	Uniflash® III Wireless Synchronization; Hard Wire (Optional)
Lantern Housing	Copper-Free Cast Aluminum Base, Stainless Steel Fittings
Mounting	(4) 5/8" by 1" Slots on a 7 7/8" Bolt Circle - 90° Apart
Operating Temperature	-20°C to + 55°C
Ingress Rating	IP-56

FIXED INTENSITIES (CANDELAS)

Input Power, W	RED	GREEN	WHITE	YELLOW
3.1	200	216	278	178
6.2	340	366	538	301
12.4	425	535	915	439
15.6	-	580	1055	475
19.4	-	680	1239	-

Note: Values in this table are from a 1x6 LED configuration. Maximum LED power dissipation for flashing lanterns for full output is 6 watts. Red LED/Red Lens, Yellow LED/Yellow Lens and Green LED/Green Lens filter factors are 0.85.



*All values are subject to change without notice.

Pharos Marine Automatic Power, Inc.
Houston, TX - USA
sales@automaticpower.com
Phone: +1-713-228-5208

Pharos Marine Automatic Power
Gray, LA - USA
rleblanc@automaticpower.com
Phone: +1-985-223-8700

Pharos Marine Automatic Power, Ltd.
London, UK
sales@pharosmarine.com
Phone: +44-20-8538-

AB Pharos Marine Pte.
Singapore
sales@pharos-api.com
Phone: +65-6747-9325